

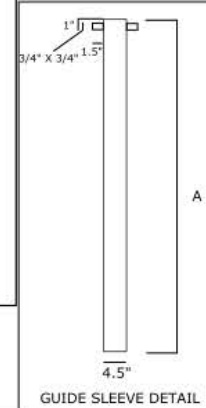
PARTS LIST

LEADS	DIMENSION A
E3536PPL	36"
E3560PPL	60"
E3584PPL	84"
E35120PPL	120"
EXTENSIONS	
E3536PPE	36"
E3560PPE	60"
E3584PPE	84"
E35120PPE	120"
GUIDE SLEEVES	
E3548PPGS	48"
E3560PPGS	60"
BRACKETS	
E35PPB	

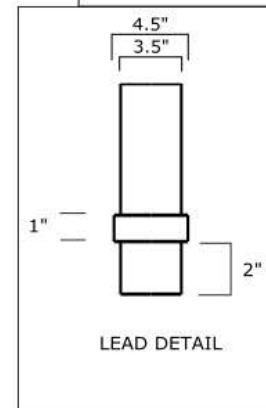
GENERAL NOTES

1. MATERIAL BRACKET BODY - 3/8" AND LOAD BEARING PLATES 1/2" THICK ASTM A572 GRADE 50
2. HOT DIP GALVANIZED PER ASTM A153
3. RECOMMENDED PILE CUTOFF FROM BOTTOM OF FOOTING TO PILE IS 12".
4. THE EMPIRE ULTRA BRACKET HAS A WORKING/ULTIMATE LOAD OF 60/120 KIPS.
5. THE CAPACITY OF THE BRACKET SYSTEM IS A FUNCTION OF MANY INDIVIDUAL ELEMENTS INCLUDING THE CAPACITY OF THE FOUNDATION, BRACKET, PIER SHAFT, HELICAL PLATE, BEARING STRATA STRENGTH OF THE FOUNDATION TO BRACKET CONNECTION, AND THE QUALITY OF THE PIER CONNECTION.
6. PILE BODY MATERIAL - 3 1/2 X .254 WALL API J55 STEEL PIPE Fy = 55 Ksi, Ft = 75 Ksi
7. GUIDE SLEEVE / LEAD RING MATERIAL - 4 1/2 X .290 / 4 1/2 X .337 API J55 STEEL PIPE Fy = 55 ksi, Ft = 75 ksi
8. INTERNAL COUPLER MATERIAL - 2 7/8 X .217 WALL API J55 STEEL PIPE Fy = 55 Ksi, Ft = 75 Ksi
9. ALL WELDING TO BE PERFORMED BY A CERTIFIED WELDER TO AWS D1.1
10. ALL MATERIAL MANUFACTURED IN THE U.S.A.

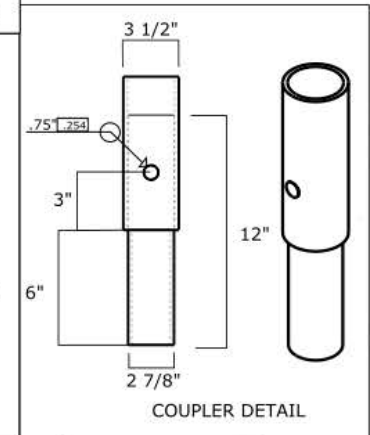
*PROPRIETARY AND CONFIDENTIAL
THE INFORMATION CONTAINED IN THE
DRAWING IS THE SOLE PROPERTY OF EMPIRE
PIERS. ANY REPRODUCTION IN PART OR AS A
WHOLE WITHOUT THE WRITTEN PERMISSION
OF EMPIRE PIERS IS PROHIBITED.*



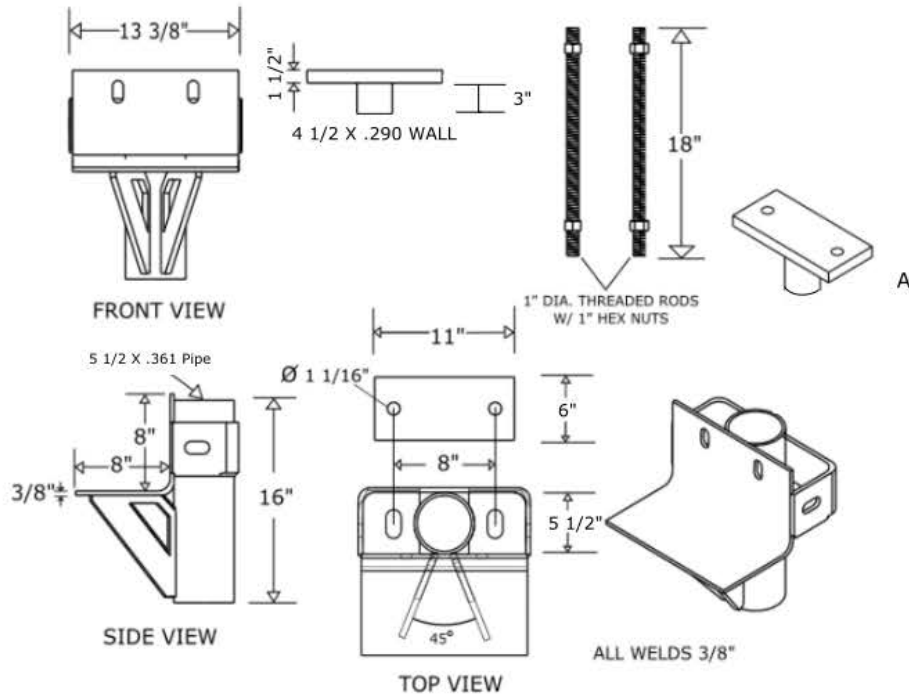
GUIDE SLEEVE DETAIL



LEAD DETAIL



COUPLER DETAIL



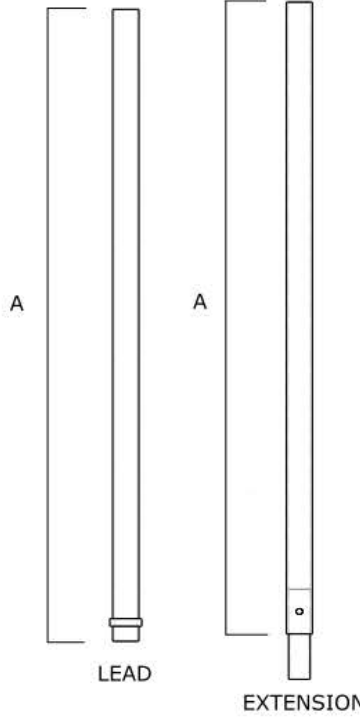
FRONT VIEW

5 1/2 X .361 Pipe

SIDE VIEW

TOP VIEW

ALL WELDS 3/8"



DRAWN TIM GROSS	4/3/2018	EMPIRE PIERS 2656 EAST HIGHWAY 47 WINFIELD, MO 63389 (636) 668-8066
CHECKED LUKE BROWN	4/3/2018	
APPROVED GREG PYLE		TITLE : 3 1/2" PUSH PIER SYSTEM
MFG Empire Piers		DWG NO E35PPSYS
SCALE NTS	DWG SIZE B	REV
		SHEET 1 of 1

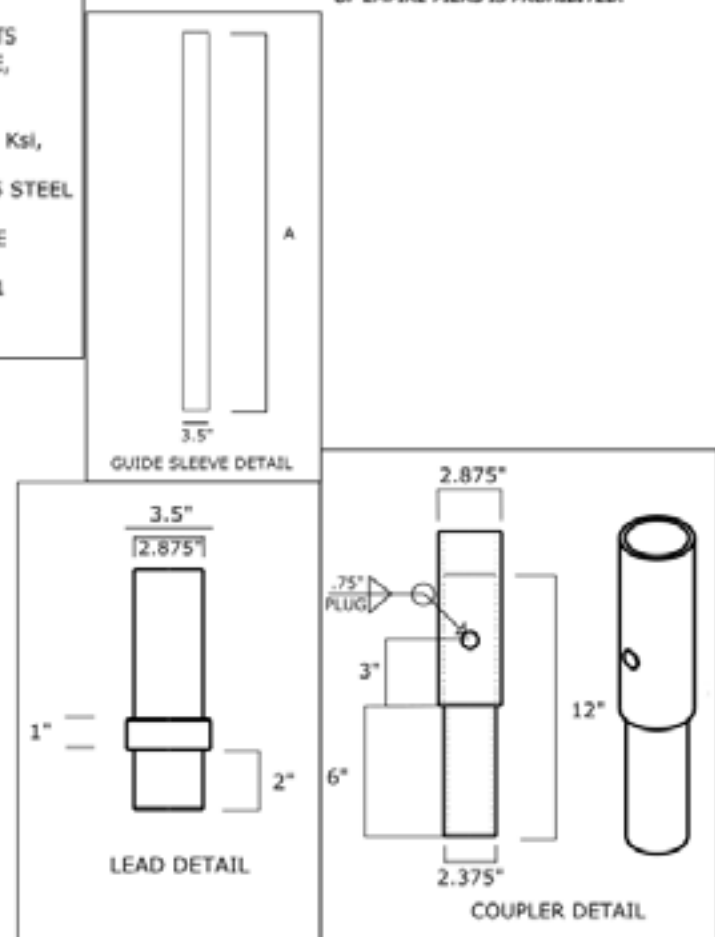
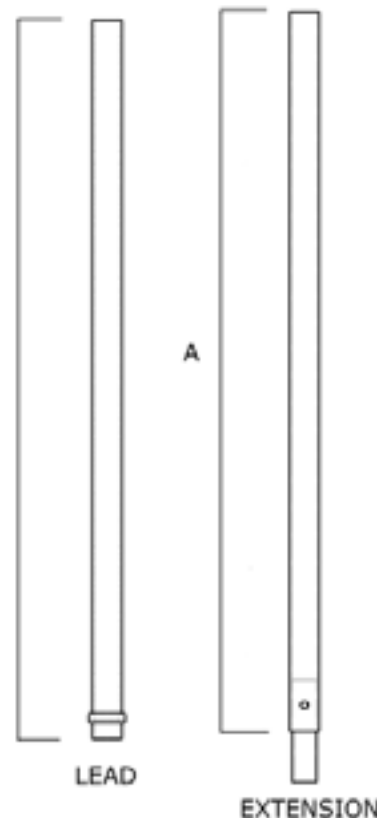
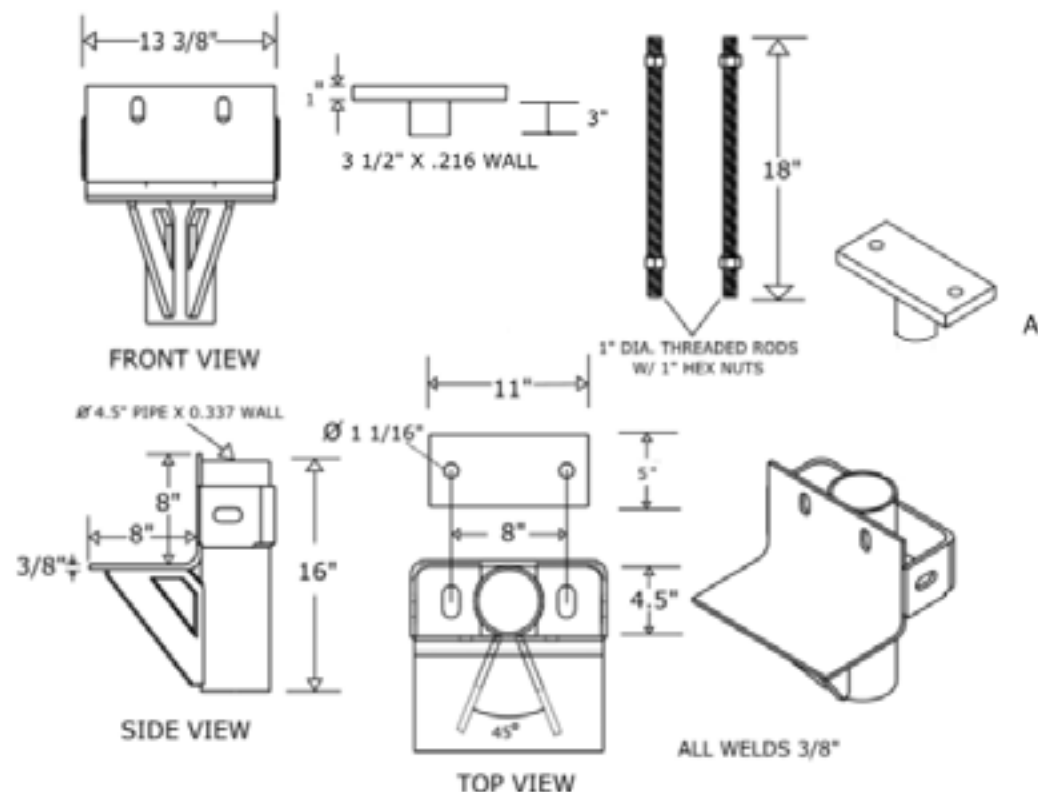
PARTS LIST

LEADS	DIMENSION A
E28736PPL	36"
E28760PPL	60"
E28784PPL	84"
E287120PPL	120"
EXTENSIONS	
E28736PPE	36"
E28760PPE	60"
E28784PPE	84"
E287120PPE	120"
GUIDE SLEEVES	
E28748PPGS	48"
E28760PPGS	60"
BRACKETS	
E287PPB	

GENERAL NOTES

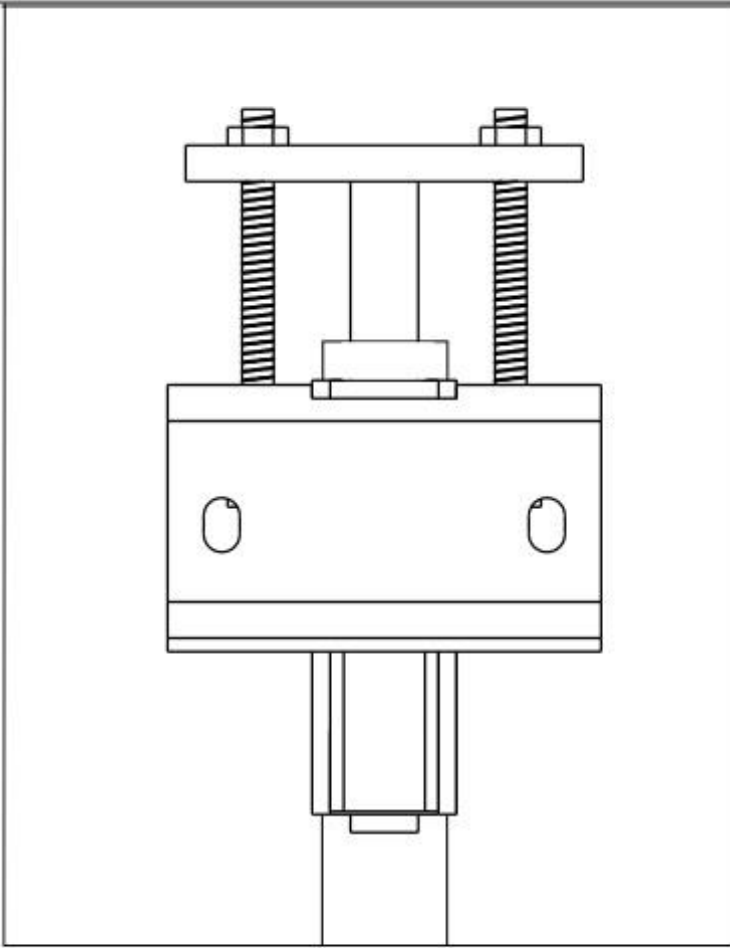
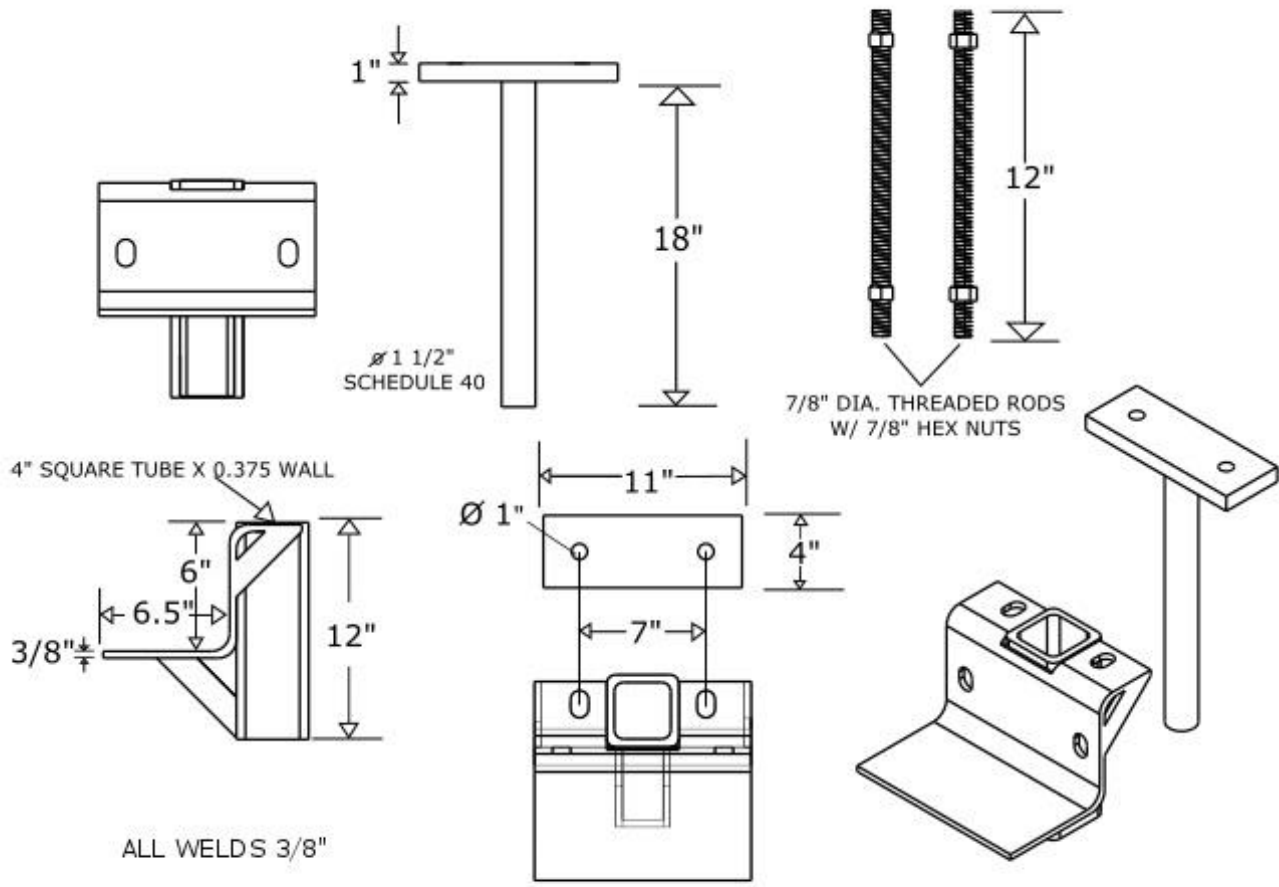
1. MATERIAL BRACKET BODY - 3/8" AND LOAD BEARING PLATES 1/2" THICK ASTM A572 GRADE 50
2. HOT DIP GALVANIZED PER ASTM A153
3. RECOMMENDED PILE CUTOFF FROM BOTTOM OF FOOTING TO PILE IS 12".
4. THE EMPIRE ULTRA BRACKET HAS A WORKING/ULTIMATE LOAD OF 95/47 KIPS.
5. THE CAPACITY OF THE BRACKET SYSTEM IS A FUNCTION OF MANY INDIVIDUAL ELEMENTS INCLUDING THE CAPACITY OF THE FOUNDATION, BRACKET, PIER SHAFT, HELICAL PLATE, BEARING STRATA STRENGTH OF THE FOUNDATION TO BRACKET CONNECTION, AND THE QUALITY OF THE PIER CONNECTION.
6. PILE BODY MATERIAL - 2 7/8" X .217" WALL API J55 STEEL PIPE Fy = 55 Ksi, Ft = 75 Ksi
7. LEAD RING AND GUIDE SLEEVE MATERIAL - 3 1/2" X .254" WALL API J55 STEEL PIPE Fy = 55 Ksi, Ft = 75 Ksi
8. INTERNAL COUPLER MATERIAL - 2 3/8" X .190" WALL API J55 STEEL PIPE Fy = 55 Ksi, Ft = 75 Ksi
9. ALL WELDING TO BE PERFORMED BY A CERTIFIED WELDER TO AWS D1.1
10. ALL MATERIAL MANUFACTURED IN THE U.S.A.

*PROPRIETARY AND CONFIDENTIAL
THE INFORMATION CONTAINED IN THE
DRAWING IS THE SOLE PROPERTY OF EMPIRE
PIERS. ANY REPRODUCTION IN PART OR AS A
WHOLE WITHOUT THE WRITTEN PERMISSION
OF EMPIRE PIERS IS PROHIBITED.*



EMPIRE PIERS
SOLUTIONS

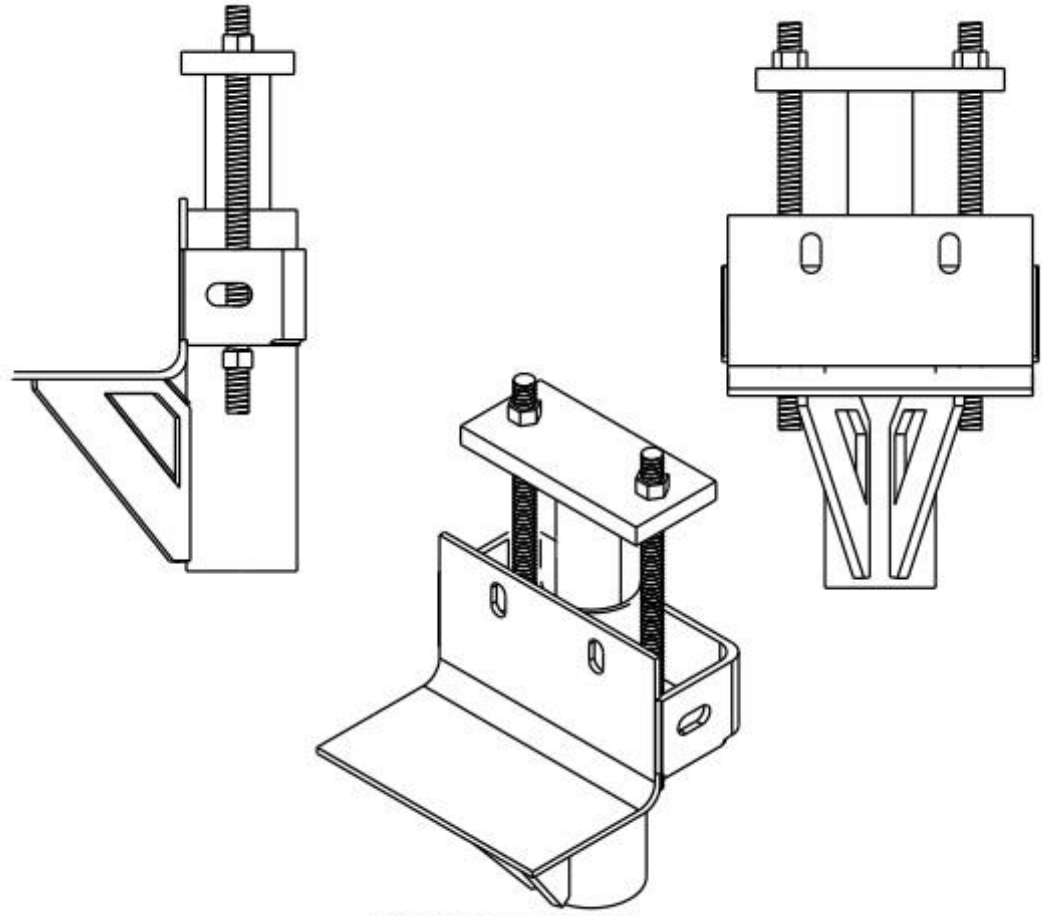
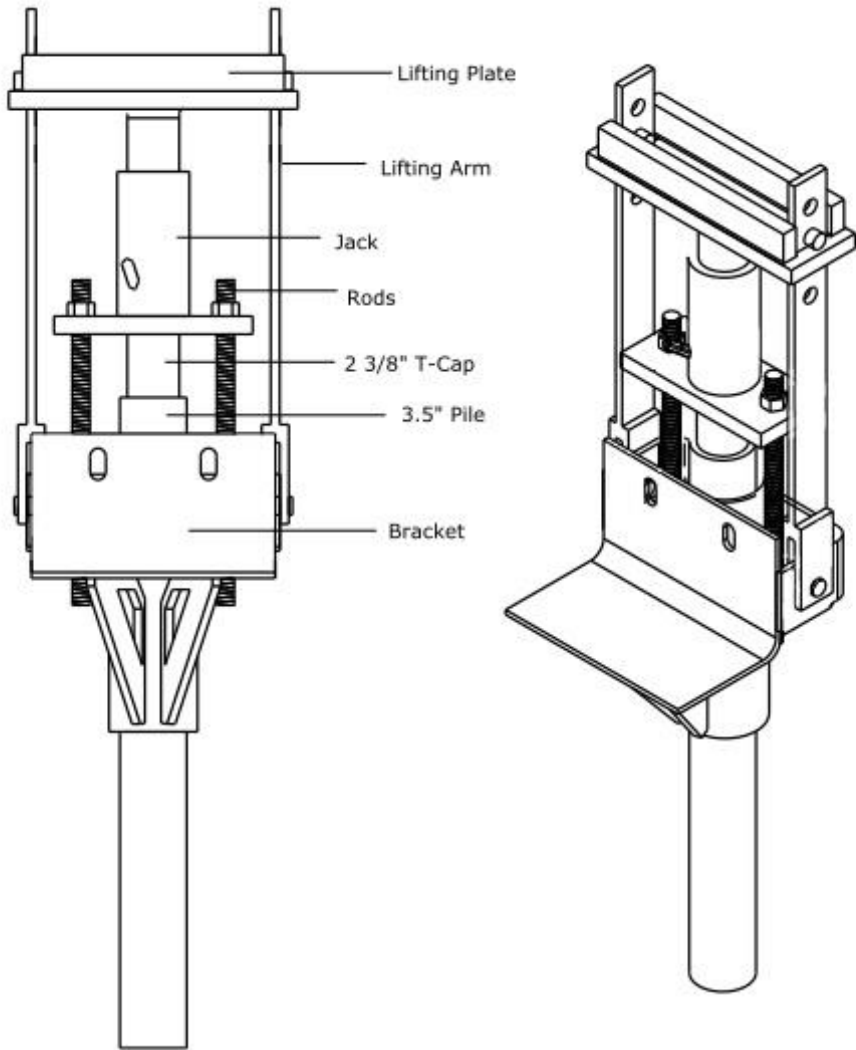
DRAWN	TIM GROSS	8/1/17	EMPIRE PIERS 2656 EAST HIGHWAY 47 WINFIELD, MO 63389 (636) 668-8066	
CHECKED	LUKE BROWN		TITLE 2.875 PUSH PIER SYSTEM	
APPROVED	GREG PYLE		SCALE	NTS
MFG	Empire Piers		DWG SIZE	8
SCALE	NTS	REV	DWG NO	E287PPSYS
			SHEET	1 of 1




- NOTES:
1. MATERIAL BRACKET BODY - 3/8" ASTM A572 GRADE 50
 2. HOT DIP GALVANISED PER ASTM A153
 3. RECOMMENDED PILE CUTOFF FROM BOTTOM OF FOOTING TO PILE IS 10".
 4. THE EMPIRE LIGHT DUTY BRACKET HAS A WORKING/ULTIMATE LOAD OF 25/50 KIPS
 5. THE CAPACITY OF THE BRACKET SYSTEM IS A FUNCTION OF MANY INDIVIDUAL ELEMENTS INCLUDING THE CAPACITY OF THE FOUNDATION, BRACKET, PIER SHAFT, HELICAL PLATE, BEARING STRATA STRENGTH OF THE FOUNDATION TO BRACKET CONNECTION, AND THE QUALITY OF THE PIER CONNECTION.
 6. BRACKET SYSTEM DESIGNED FOR 2 7/8" PIERS.

Title: LIGHT DUTY BRACKET 2 7/8" SYSTEM			
DRAWN BY: Tim Gross		 Empire Piers 2656 EAST HIGHWAY 47 WINFIELD, MO 63389 (636) 668-8066	
CHECKED BY:			
APROVED BY:			
MANUFACTURED BY: Empire Piers			
SCALE: NTS	DWG SIZE: A4	DRAWING NUMBER: ELDB2876	SHEET: 1 of 2

FULL LIFTING ASSEMBLY



FINAL ASSEMBLY

Title:			
ULTRA BRACKET 3 1/2" SYSTEM			
DRAWN BY:			
Tim Gross			
CHECKED BY:			
APPROVED BY:		Empire Piers 2656 EAST HIGHWAY 47 WINFIELD, MO 63389 (636) 668-8066	
MANUFACTURED BY:		DRAWING NUMBER:	
Empire Piers		ICCEULTRA	
SCALE:	DWG SIZE:	SHEET:	
NTS	A4	2 of 2	